

# Mordecai Matters



## 2010 UPCOMING EVENTS

### Chowderfest

Saturday, October 9th  
All day: MLT at Merchants Mart. Volunteers needed!

### Casino Night Fundraiser

Saturday, October 9th,  
6–10 PM  
Beach Haven Fire House  
(see back page for details)

### Trustees Meeting

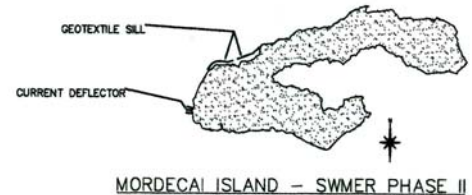
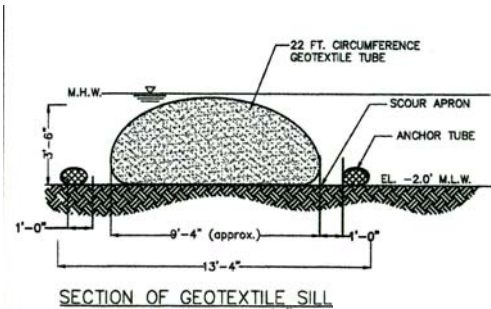
Sunday, October 10th,  
4:30 PM, Molly Allison, West Ave., Beach Haven

## IT'S A GO! SWMER II SLATED FOR THIS FALL

At long last, we can report that SWMER II will be happening this fall. MLT has engaged Pond Recovery Services, Inc. to install SWMER II on the southwest edge of Mordecai Island, the same general area where the biologs were installed in 2006. The small natural fiber biologs installed as part of "SWMER I" (particularly those that were placed on the island's western edge and bore the full brunt of wake, wave and weather action) proved inadequate to retard further erosion. By comparison, SWMER II primarily involves the installation of 570 linear feet of sand-filled "Geotube" sills (in two

sections) that are much larger and stronger than the original biologs. Other aspects of SWMER II include several perpendicular current deflectors (approximately 20 linear feet each) on the southern edge of Mordecai which are intended to reduce erosion caused by tidal currents.

We also continue in our discussions with the Army Corps of Engineers regarding possible alternative projects to address erosion on the northwest portion of Mordecai. We appreciate your patience and continued interest and support regarding these projects.



## NEW AERIAL SURVEY SHOWS GOOD/BAD NEWS



In order to measure and track erosion with more precision, MLT commissioned an updated aerial survey of Mordecai Island from LGA Engineering, a part of the Birdsall Services Group, which had also conducted an aerial survey in 2006. While results of the new survey are not completely finalized, preliminary results reveal continued erosion on the western edge, generally stable conditions on the eastern and southeastern edge, and best news of all, some accretion on the inner edge of the "lower claw" that surrounds the cove towards the south end of Island. On the map, the solid color represents the island's dimensions in 2006 (based on the initial aerial survey) and the contrasting line indicates the preliminary results of the 2010 aerial survey.

*Above, the solid color represents the island's dimensions in 2006, according to the aerial survey taken that year, and the contrasting line indicates the dimensions based on the preliminary results of the 2010 aerial survey.*

# What We Did This Summer

## MORDECAI VISITS LONG BEACH ISLAND SCHOOL

On Friday, May 21<sup>st</sup> Linda Colgan and Jeanne Runne of Mordecai Land Trust visited Long Beach Island Grade School. They presented the Mordecai slide show to two groups comprised of 4<sup>th</sup>, 5<sup>th</sup> and 6<sup>th</sup> graders, many of whom also participated in our Miles for Mordecai event on May 29<sup>th</sup>. These LBI School students also were the first to take our “Mordecai Matching Quiz,” which has proven to be a fun way to reinforce the species information available on the street end signs. While they were enthusiastic and interested in everything about Mordecai, they were especially fascinated with anything involving turtles.

Our thanks to LBI School teacher Cathy McBride for coordinating the event and for her hospitality.



MILES FOR MORDECAI, sponsored by MLT’s Education Committee, brought out an enthusiastic crowd on Memorial Day Saturday, despite some threatening weather. Pictured above: the starting line receiving some last minute instructions. Below left: left to right, Drew, Rick and Alex Bentley. Below right: Gianna Guttilla enjoying her ice cream sundae creation.



“Clammer Ted” entertained the crowds as “Elvis” in July at our very successful SUNSET OVER MORDECAI fundraiser. Above right, a MLT Annual Meeting audience enjoyed guest speaker Skyler Streich’s presentation on birds of the Barnegat Bay in August.



ON THE ROAD AGAIN: Jeanne Runne at the LBI Foundation’s Barnegat Bay Day; Pat Miller under our blue tent at the ALO’s second Annual Long Board Surfing Classic, and Linda Colgan at Polly’s Dock along with other environmental groups on Meerwald Day in Beach Haven.



## Dave Mitchell: the loss of an ardent supporter

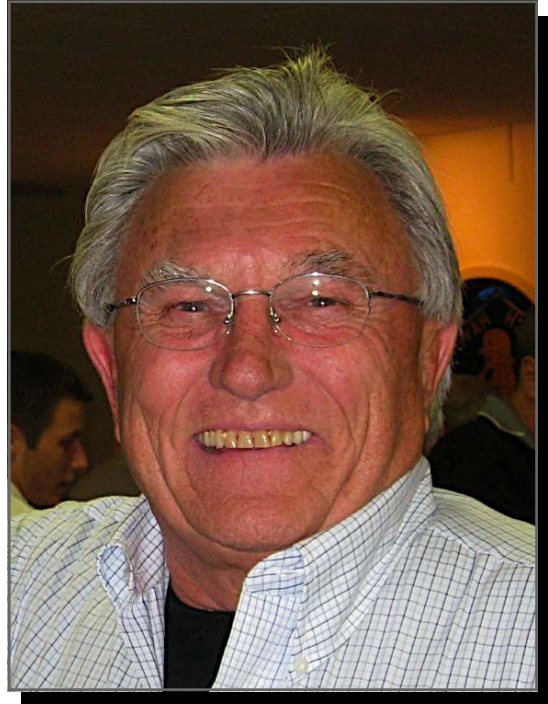
Mordecai lost one of our most ardent supporters this July when David T. Mitchell died of heart complications. Dave was truly one of our most enthusiastic fans. He had great respect for the environment and was particularly fond of the Mordecai restoration and preservation efforts.

Often during fierce winter storms, Dave would take pictures from his deck on Pearl Street, showing Mordecai being attacked by nature's elements. He attended many of our meetings and could always be counted on to ask a tough question or offer an encouraging comment to the Board. He helped map and set stakes, volunteered for the fall clean-up, gathered databases, and was a generous contributor. We could always rely on Dave whenever Mordecai needed an extra hand.

We will all miss Dave's support, his wonderful humor, and his unbounded enthusiasm for life.

Dave grew up in Toms River, spent time in the Marine Corps, lived in Medford, and then spent the last years of his life in Beach Haven. He was an avid boater and sailor and loved being on the bay. He leaves a wife Beverly, son David, and daughters Lauren and Susie.

Before he died, Dave designated Mordecai Land Trust for contributions to be made in his name. We thank his family for this very generous gift.



*David T. Mitchell*

## New Slate of Mordecai Land Trust Board of Directors and Officers

The following were appointed by the Members of Mordecai Land Trust to the Board of Trustees at the August 22, 2010, annual meeting as **Appointed Trustees** to serve a 3-year term starting in October 2010 and expiring 2013:

Kathleen Birch  
Linda Colgan  
Deb Harkness  
Ken Pilla  
Sharon Stefanoni  
Sharon Twomey

For appointment by the Trustees of Mordecai Land Trust, at their next Trustees Meeting, Nominations for the following **Officers** to serve for the 2010/2011 year are as follows:

Dr. Jeffrey C. Hager, President  
Michael Davis, 1st Vice President  
Jeanne Runne, Vice President  
Marilyn Thomas, Treasurer  
Patricia Herrmann, Secretary  
Philip Flagler, Assistant Treasurer and Assistant Secretary

Following the appointments referred to above, the members of the **Executive Committee** of the **Board of Trustees** and of the full Board (and their respective terms) would be as follows:

### Executive Committee

Jeanne Runne, 2013  
John Cranmer, 2014

Dr. Jeffrey Hager, 2011  
Michael Furman, 2012  
Art Barron, 2012  
Mike Davis, 2011  
Mayor Charles Maschal, ex officio

### Board of Trustees (in addition to Executive Committee Members)

Patricia Herrmann 2011  
Patricia Miller 2011  
William Pilling 2011  
Marilyn Thomas, 2011  
Davie Allieri, 2012  
Dr. Pat Daggy, 2012  
Rich Oelkers, 2012  
Doug Walker, 2012  
Kathleen Birch, 2013  
Linda Colgan, 2013  
Deb Harkness, 2013  
Ken Pilla, 2013  
Sharon Stefanoni, 2013  
Sharon Twomey, 2013

Respectfully submitted,  
Mordecai Land Trust Nominating Committee  
Marilyn Thomas  
Linda Colgan

**Mordecai Land Trust**  
**P.O. Box 1414**  
**Beach Haven, NJ 08008-0084**



Address Correction Required

*Mordecai Matters*

*A publication of Mordecai Land Trust*  
*Linda L. Colgan, Richard G. Oelkers, Jeanne Runne, Editors*  
*Photographs by Linda Colgan and Jeanne Runne*  
*Email: [info@mordecaimatters.org](mailto:info@mordecaimatters.org)*

**We're on the web! [Mordecaimatters.org](http://Mordecaimatters.org)**

Benefit for Mordecai Land Trust  
**CASINO NIGHT**  
Saturday, October 9, 2010  
**6-10 PM**  
Beach Haven Fire House  
Amber & Bay Avenue, Beach Haven NJ 08008



**\$50 per person**  
Includes drinks, light fare  
and \$25 gambling chips  
*Presented by* TUMBLING DICE

Please reserve \_\_\_\_\_ tickets for Casino Night at \$50 each. Total @ \$50 \$ \_\_\_\_\_

I am unable to attend, but enclosed is my tax deductible contribution \$ \_\_\_\_\_ Total enclosed \$ \_\_\_\_\_

Name \_\_\_\_\_ Address \_\_\_\_\_

Address \_\_\_\_\_ State \_\_\_\_\_ Zip \_\_\_\_\_

Telephone \_\_\_\_\_ E-Mail Address \_\_\_\_\_

Cut off and mail to "Mordecai Land Trust" C/O Casino Night, PO Box 1414, Beach Haven, NJ. 08008. Make your check payable to "Mordecai Land Trust." **Call 609-492-4153** for more information. Local # RL02-2010 Alcohol # 10008330